



# What's in Your Attic? NEED MONEY?



I'm Buying These Hidden Attic Treasures!

## GOLD & SILVER

COINS • JEWELRY • WATCHES  
TEETH • STERLING FLATWARE  
STERLING SERVING PIECES

## MONEY

U.S. & FOREIGN COINS  
PAPER MONEY (Gold & Brown Seal)  
PAPER MONEY (LARGER SIZE)

## COMICS

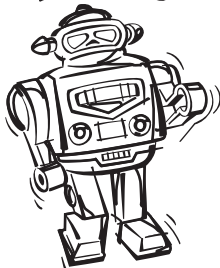
10¢ & 12¢ COMICS  
ESPECIALLY SUPERHEROES  
MARVEL • BATMAN • SUPERMAN  
FANTASTIC FOUR • SPIDERMAN

## BABY BOOMER BONANZA

Pre 1970

Pre 1970

### TOYS



#### TOYS

**Marx:** Keywind, Battery, Trucks, Playsets (Cowboys, Army, Knights, Space, Civil War, French Foreign Legion, Ft. Apache, Prince Valiant, Space Sets, Military Sets, Jellystone Park, Robin Hood, etc.), Cartoon Characters, Disney Toys, Popeye, Superman, Amos & Andy

**Figures:** TV & Comic Characters, Pre 1970 G.I. Joe & accessories, Superheroes, HeMan, Metal Soldiers and Yard Figurines (Skaters, Brittians, etc.)

**Ideal:** Metal or Plastic Toys

**Sheet Metal:** Smith Miller, Tonka, Keystone, BuddyL, Structo

**Collectible:** Dinky, Corgi, Mattel, Hot Wheels, Match Box, Hess, Brittians, Schoenhuf & Steif (Bears, Dolls, etc.)

**Pre 1960:** Battery Operated Toys

**Renwal:** Plastic Toys

#### BANKS

Pre 1960 Cast Iron & Tin Banks

#### TRAINS

Lionel Trains & accessories, Xmas Yard Toys (Houses, People, Accessories) American Flyer Trains & Accessories

#### DOLLS

Pre 1960 Dolls, Composition Shirley Temple, Characters, Bisque (Porcelain), Barbies, Ginny, Md. Alexanders

#### GUM & TOBACCO CARDS

Pre 1970 including all sports, War (Horrors of war, etc), Celebrities (Elvis, Cowboys, Mickey Mouse)

#### MISCL.

Pre 1920 Postcards, Mining Lights, Costume Jewelry, Military Souvenirs, Yuengling Items, Clocks & Watches, Musical Instruments (Violins, Banjos, Guitars, Fancy Brass)

#### ART WORK

Luks, Bervenckak, Nutting, Parrish, Old Paintings

#### U.S. MONEY

**Gold Coins:** All (Including Foreign Gold)

**Silver Coins:** Dollars, Halves, Quarters, Dimes

**Old Coins:** Indian Head, 2¢, 3¢

**Coin Sets:** Mint, Proof, Commemorative

**Paper Money:** Especially with Gold or Silver Seals & Oversize Money



### George F. Blum • Certified Appraiser

As of December 2006, I am no longer associated with any Auction company. I am in my own business using my 40+ years experience and professional contacts to get you the best price for your valuables.

I competively buy items outright or act as a consultant and appraiser to help liquidate items I personally do not handle.

I am a certified personal property appraiser. Professional appraisals offered for your inheritance, insurance or liquidation needs.

Be assured you will be treated honestly and professionally.

Please contact me for a personal appointment at our mutual convenience.

**SAME  
DAY  
CASH!**

## Blum Appraisals

POTTSVILLE, PENNA.

The **ONLY** numbers to call for  
**GEORGE BLUM:**

**570-628-5530 or 570-449-3083**

[www.gblum.com](http://www.gblum.com)