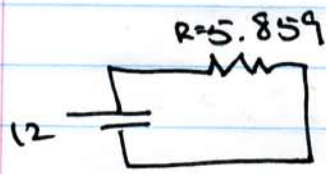
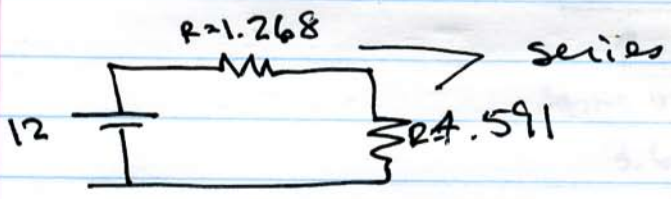
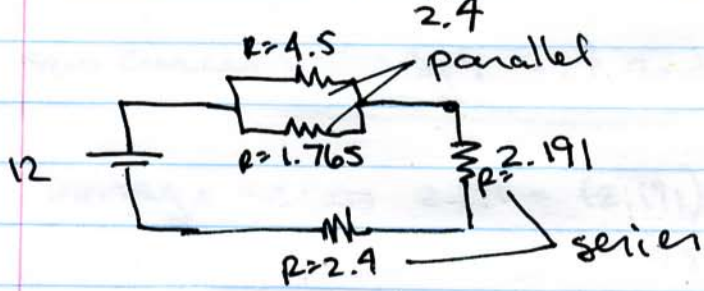
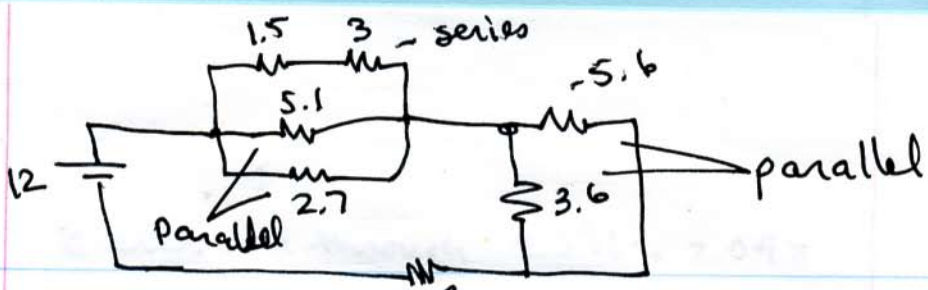


43.



(A) 5.859 kΩ - equiv resistance

(B) $V = IR$ $12 = I(5.859)$
 $I = \underline{2.048 \text{ mA}}$
 also current through 2.4

V across 1.268

∴ $RI = (1.268)(2.048)$
 $= 2.5969 \text{ v}$ - same voltage across 2.7

$V = IR$ $2.5969 = I(2.7)$
 current through 2.7 $I = \underline{.9618 \text{ mA}}$

V across 4.591 ∴ $RI = (4.591)(2.048) = 9.4$ (not needed)