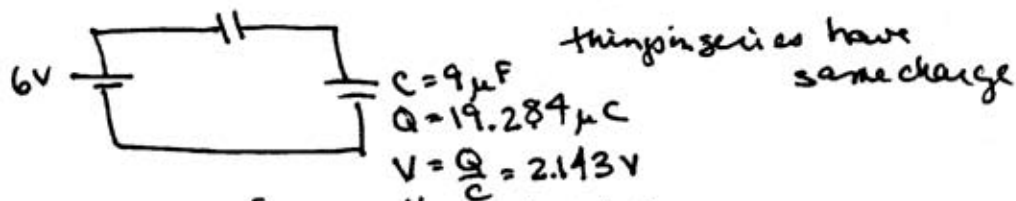


$$Q = VC = (6)(3.214) = 19.284 \mu\text{C}$$

$$C = 5 \mu\text{F}, Q = 19.284, V = \frac{Q}{C} = 3.857$$



$$C = 2 \mu\text{F}, V = 3.857\text{V}, Q = CV = 7.71 \mu\text{C}$$

