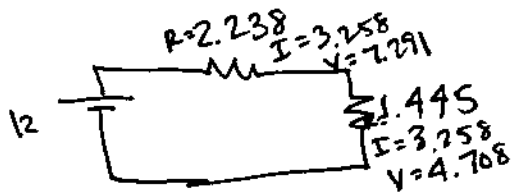
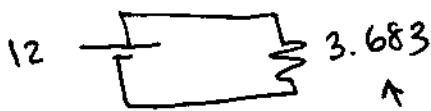


1.33 + 1.47 in parallel
1.87 + 1.96 in series



.698 + 1.54 in series
2.32 + 3.83 in parallel



2.238 + 1.445 in series

3.683 is the equivalent resistance

$$V = IR \quad 12 = I(3.683) \quad I = 3.258 \text{ mA}$$

The current through 1.54-kΩ resistor is 3.258 mA

The voltage across the 2.32-kΩ resistor is 4.708 volts

~~The~~ The current through the 1.47-kΩ resistor is 1.547 mA