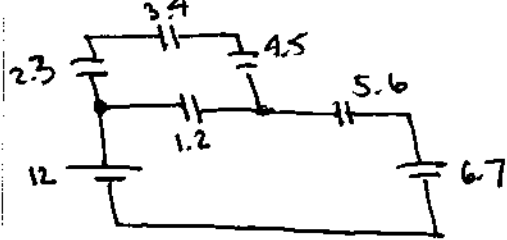
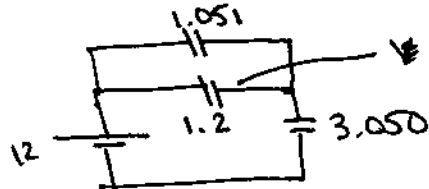


④



2.3, 3.4 & 4.5 in series \Rightarrow 1.051

5.6 & 6.7 in series \Rightarrow 3.050



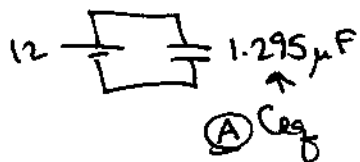
$C = 1.2, V = 6.904, Q = 8.285 \mu C$
 charge on 1.2 μF cap

1.051 & 1.2 in parallel \Rightarrow 2.251

$C = 2.251, Q = 15.54, V = 6.904$



2.251 & 3.050 in series \Rightarrow 1.295 μF



Ⓐ C_{eq}

$$Q = VC = (12)(1.295)$$

$$\text{Ⓑ} = \underline{15.54 \mu C} \text{ goes on } 5.6 \mu F \text{ cap}$$

Ⓓ charge is 15.54 $V = \frac{Q}{C} = \frac{15.54}{6.7} = \underline{2.319 \text{ volts}}$