

Specific Rotations of some Organic Compounds

Compound $[\alpha]_D$ # chiral centers

Penicillin V +233.0 3

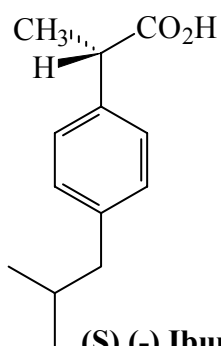
Sucrose +66.5 10

Camphor +44.3 2

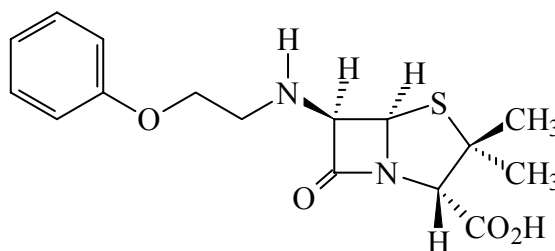
MSG +25.5 1

Cholesterol -31.5 8

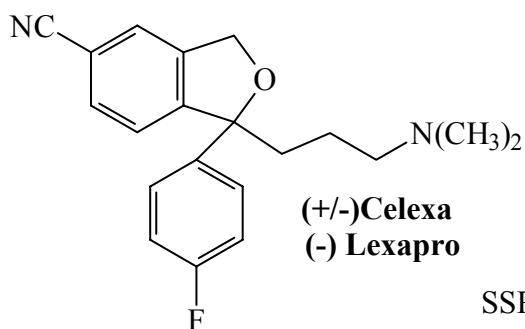
Morphine -132.0 5



(S) (-) Ibuprofen
antiinflammatory

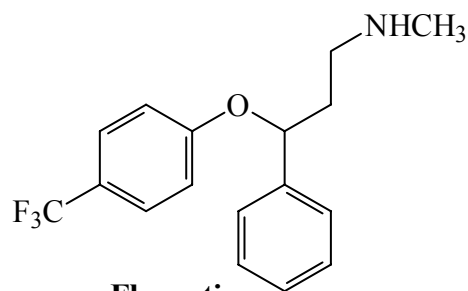


Penicillin V
antibiotic

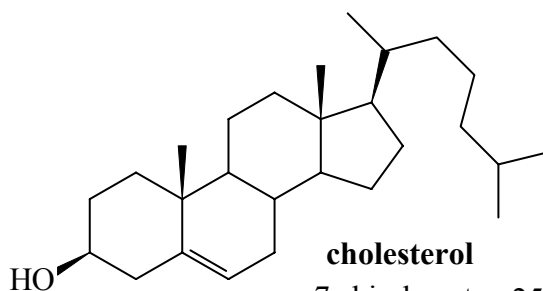


(+/-)-Celexa
(-) Lexapro

SSRI



Fluoxetine
Prozac



cholesterol

7 chiral centers 256 possible stereoisomers